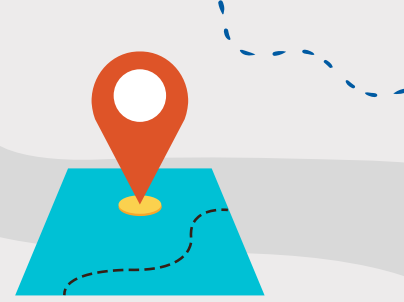


Your Guide to Interior Health's Community Health & Climate Change Maps



The Interior Health (IH) **Community Health and Climate Change Maps** were inspired by a similar set of maps developed to represent community vulnerability to climate change in Vancouver Coastal Health and Fraser Health. The IH maps were created to increase awareness about what causes some communities in the Interior to be inequitably impacted by climate change. This is your guide to understanding what these maps are all about and how you can use them!

Defining Vulnerability

In this context, increased risk of negative health outcomes is described as vulnerability. Vulnerability is made up of **3 factors**:

Exposure
the likelihood someone will encounter a hazard

+

Sensitivity
how physiological characteristics impact one's exposure to a hazard

+

Adaptive Capacity
the ability to adjust to or reduce health risks

Mapping Vulnerability to Four Hazards

Using a statistics method that draws conclusions about populations, overall vulnerability scores (exposure + sensitivity + adaptive capacity) were created for each IH region. Researchers then used GIS mapping software to create a picture of vulnerabilities to **4 climate hazards** across IH:



Extreme Heat



Flooding



Wildfire Smoke



Extreme Cold

Click [here](#) to learn more about these four climate hazards and their Impact on community health.

A Few Things to Keep in Mind...

Before using the maps, it is important to know their limitations:

- 1 Many of the variables that contribute to vulnerability are not easily quantified and had to be interpreted by the map authors. Therefore, the maps should be used alongside other resources.
- 2 The maps are based on census data, so they show vulnerabilities based on where people live, not where they work. Some people may be more vulnerable to a climate hazard while at work (e.g., working outdoors during a heat wave). Vulnerable populations may also be transient, and therefore not captured by the maps.

You Can Use IH's Community Health and Climate Change Maps to...



Get Thinking

- Spark conversation about the climate hazards your region is facing
- Raise awareness about the inequitable impacts of climate change on health
- Brainstorm research questions about why some groups are more vulnerable than others (taking the physiological, social, and environmental determinants of health into account).

Get Planning

- Inform climate adaptation, emergency response planning, and policy development
 - Integrate into your Climate Action Plans, Social and Community plans, and use to inform decision making within your Emergency Operation Centre
- Use data for land-use or service planning
 - Integrate into your Official Community Plan, inform zoning or the development of parks and green spaces
- Pinpoint infrastructure planning needs
 - Identify where clear air spaces, new transit systems, or flooding mitigation infrastructure may be effective
- Prioritize community resilience planning
 - Determine where a campaign about checking on your neighbours during an extreme weather event might be especially effective



Get Collaborating

- Work with your Interior Health Healthy Communities Team to:
 - Develop strategies to build climate resilient communities
 - Add a climate-health equity lens to all relevant plans
 - Develop and embed a Heat Alert and Response System (HARS)
 - Advocate for supports and resources
 - Use culturally safe, strengths-based, or participatory planning approaches
 - Support policy development across various sectors about climate equity



It's Time to Adapt

We know that the climate risks we are facing will continue, and we know that we need to adapt. These maps are intended to help you think about your community's adaptation strategy, and ensure the most vulnerable populations are prioritized when it comes to creating resilient communities and responding to climate events.

- Link to IH Maps: <https://storymaps.arcgis.com/stories/19911ac6afeb4ad0b2f3bce166829337>
- Learn more about the maps by reading the [project summary](#) or the [technical report](#)
- Interested in adding this data to your own GIS maps? Click [here](#) to access the spatial data!
- Questions? Contact us at hbe@interiorhealth.ca