

# 2024 QUICK FACTS

- 59 MUNICIPALITIES
- 54 FIRST NATION COMMUNITIES
- 23 PRIMARY CARE CLINICS
- 15 MÉTIS CHARTERED COMMUNITIES
- 7 REGIONAL HOSPITAL DISTRICTS
- 7 DIVISIONS OF FAMILY PRACTICE
- 8 PRIMARY CARE NETWORKS

SERVING OVER  
**870,719**  
INDIVIDUALS ACROSS  
THE SOUTHERN  
INTERIOR OF B.C.

WITH A  
BUDGET OF  
**\$3.5B**

AND  
COVERING OVER  
**215,000**  
SQ KILOMETRES



**33,600+**  
ACTIVE MENTAL HEALTH  
AND SUBSTANCE USE CLIENTS  
served in community settings  
each year

**42,000+**  
HOME HEALTH CLIENTS  
served in community settings  
each year

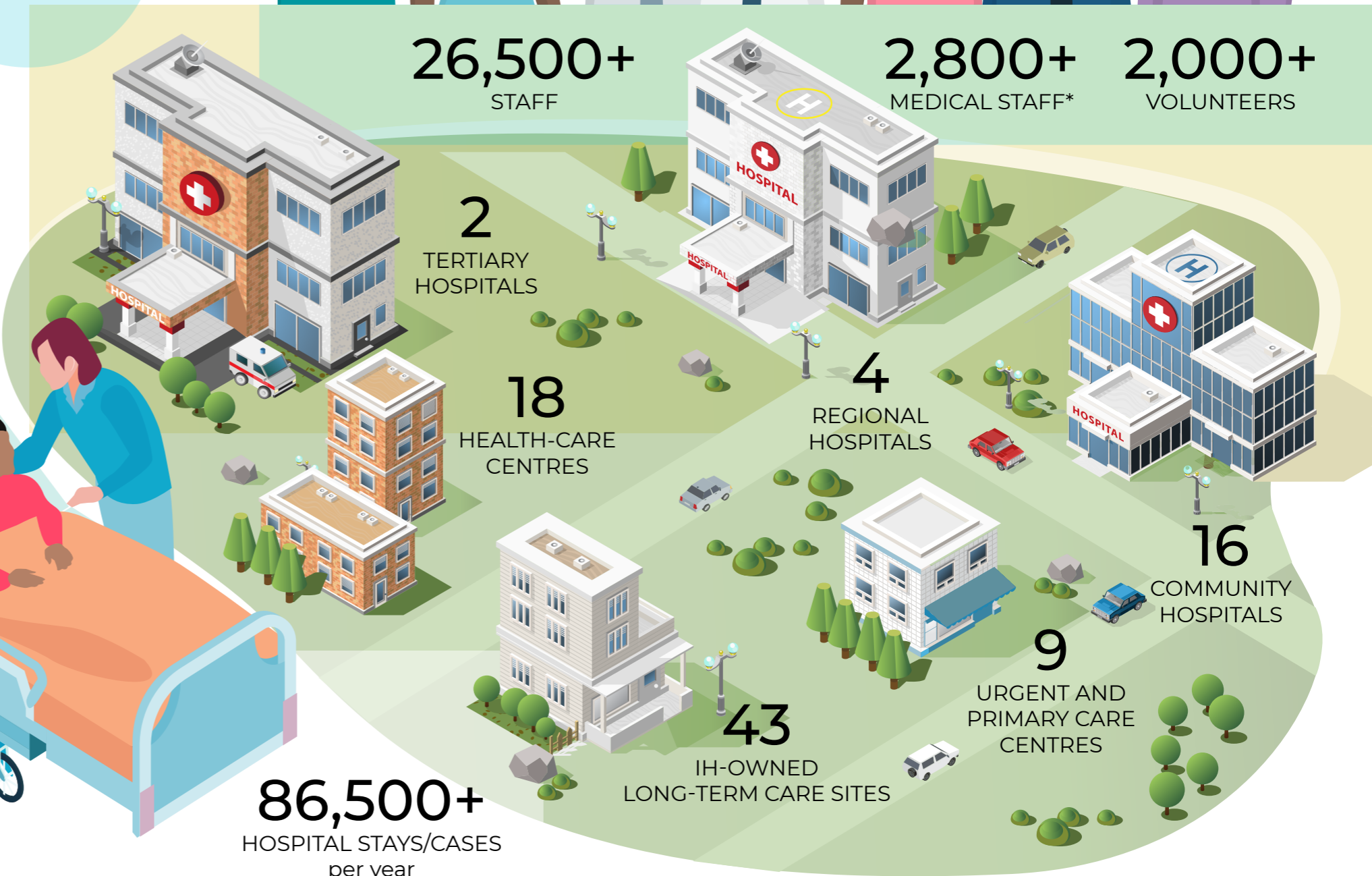
**9,700+**  
LONG-TERM CARE AND  
ASSISTED LIVING RESIDENTS  
in IH-owned and partner sites  
served per year

**86,500+**  
HOSPITAL STAYS/CASES  
per year

**26,500+**  
STAFF

**2,800+**  
MEDICAL STAFF\*

**2,000+**  
VOLUNTEERS



\*physicians, nurse practitioners, dentists and midwives